

SLIMBRIDGE

primary school

Prospectus 2024/25

HEADTEACHER'S WELCOME

Preparing children for the challenges and opportunities of tomorrow is something we only get the chance to do once, whether as teachers or as parents.

By the time children leave us, many of the things that make them who they are – their beliefs, values, and sense of self – will already be forming. It is an enormous shared responsibility, and one that has particular significance within the special context of a primary school. The question then is how best to prepare children for the changing world they will come to shape. At Slimbridge Primary School, we believe the answer lies in knowing, valuing, and challenging every individual, stretching and supporting them in equal measure.

Slimbridge is unashamedly ambitious when it comes to delivering every child a first-rate education, but we know academic results alone are not everything. To truly succeed, students need more than just knowledge...They will need the confidence and resilience to embrace new challenges, they will need an open mind that is global in its outlook, and they will need the emotional maturity and moral grounding to be a force for good in the communities they will go on to serve. Hence our vision statement: Slimbridge, Where Ambitions are Nurtured (SWAN). We are an inclusive school community, empowering GREAT citizens of tomorrow.

We are incredibly proud of our children and what they achieve. Indeed, alongside our academic philosophy, comprehensive learning support, and fantastic curriculum, it is the wonderful children and their families that make Slimbridge such a truly special place to learn.

Lisa Hillman | Headteacher

Our school vision
is simple

**SLIMBRIDGE
WHERE
AMBITIONS ARE
NURTURED**



*An inclusive school community,
empowering **GREAT** citizens of
tomorrow.*

Our core values

Generosity

Resilience

Empathy

Achievement

Teamwork



Our Children's Attainment 2023

Our children are successful learners. Results from the 2023 national statutory assessments demonstrate how well our children achieve in comparison to national averages.

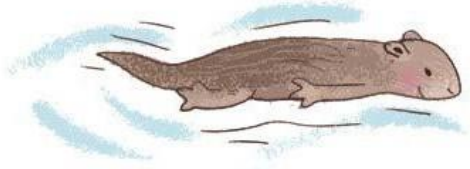
Year 1 Phonics	Slimbridge	National Average
	80%	75%
Key Stage 2 SATs		
Reading	86%	73%
Writing	79%	78%
Maths	86%	73%
Combined	79%	60%





'My daughter loves coming to school, she is happy and challenged, and her teachers really care.'

Our Teaching Team

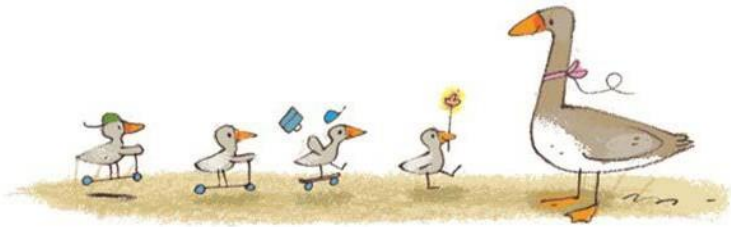
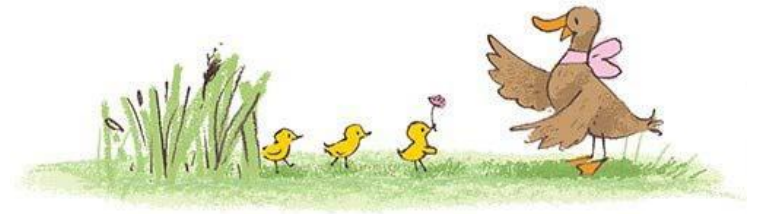


Little Otters (Pre-School)

Mrs Jo Jenkins Mrs Caroline Charnley – Heaton & Mrs Heather Smith

Duckling Class (Reception)

Mrs Baird, Mrs Clune and Mrs Pearce

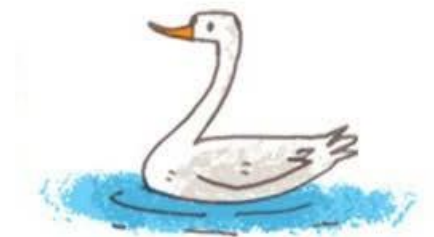


Gosling Class (Year 1)

Mrs Toms & Mrs Arkwell Smyth

Cygnets Class (Year 2)

Miss Harker & Miss Norman



Avocet Class (Year 2 and Year 3)

Mr Ford, Mrs Davies, Miss Messenger & Mrs Smith



Heron Class (Year 4/5)

Miss Beale, Mrs Holme & Mrs Mutalindwa

Flamingo Class (Year 5/6)

Miss Glover, Mrs Howard, Mrs Priddy & Mrs Dunn



Mrs Carter, Mrs Clune & Mrs Malkin - PPA Teachers

Miss Beale SENCo & Deputy Designated Safeguarding Lead

Senior Leadership Team – Mr Ford, Mrs Baird and Miss Beale

Mrs Hillman - Headteacher and Designated Safeguarding Lead

*‘Slimbridge Primary is so
much more than a school,
it’s a family.’*







School Uniform

White polo shirt or shirt

Maroon jumper or cardigan

Grey trousers, skirt or shorts

Black, sturdy school shoes

P.E Uniform

White t-shirt with Slimbridge Logo

Navy or grey shorts and/ or joggers



Our School Day

8:40am School Gates Open

8:45am School Day Starts - Registration

9:00am Session One

10:40am Break time

11:00am Session Two

12:00pm Lunch time

1:00pm Session Three

3:15pm School Day Ends

(Gates open at 3:15 p.m)

Early Birds Breakfast Club opens at 7:30am

Owl After School Club runs 3:15pm - 5:30pm

(4:30pm on Fridays)

Snack and Lunches

Toast Time:

Every child can have a delicious piece of toast to start each day. We know that a carbohydrate based snack helps keep children full, concentrate and learn. All children need to bring a bottle for **water** to keep hydrated throughout the day.

School lunches:

Our school lunches are cooked fresh by local caterers Hillary's Kitchen. Lunches are free for Reception to Year 2 through Universal Free School Meals and cost £2.40 (Y3-Y6) and can be ordered online using ParentPay.

Packed Lunches:

Children can bring a packed lunch to school each day. We teach children about healthy lifestyles and offer sessions to families so that packed lunches are delicious and nutritious.

Clubs

We offer a wide variety of clubs that take place during lunch times and after school. These are run by members of staff, parents and outside agencies.

Some of the clubs currently on offer are:

Craft

Multi-skills

Kwik Cricket

Construction Club

Cross-country/netball

Football/athletics





Community

We are fortunate to have such strong links within our local community and the wider parish. For example, Friends of Slimbridge School (FOSS) is a dynamic and active group of parents who run incredible events to raise money for school projects. Recent highlights have included a pantomime visit, Quiz Night, and a pop-up doughnut shop! We are lucky to have close links with WWT Slimbridge, St John's Church, the Parish Council, and other local schools. We are proud of our community and taking an active part in village life.

Sustainability

We know how important it is to teach children to live sustainably in our world. We are very lucky to have a special relationship with WWT Slimbridge. Each class visits the centre at least once a year, and their team of world-class ecologists support us with learning projects in school.

Slimbridge Primary School | St John's Road, Slimbridge, GL2 7DD | 01453 890216
www.slimbridgeprimaryschool.org.uk